

EXPLORING A WEALTH OF OPPORTUNITIES



HAWKEYE Gold & Diamond Inc.
Corporate Presentation
May 2012

Forward-Looking Statement



This presentation may contain forward-looking statements within the meaning of the Canadian securities legislation and the United States Private Securities Legislation Reform Act of 1995. These forward looking statements are made as of the date of this presentation and the Company does not intend and does not assume any obligation to update these forward-looking statements.

Forward-looking statements relate to the future events or the anticipated performance of the Company and reflect management's expectations or beliefs regarding such future events and anticipated performance. In certain cases, forward-looking statements can be identified by the use of words such as plans, expects, budget, scheduled, estimates, forecasts, intends, anticipates or believes, or variations of such words and phrases or statements that certain actions, events or results may, could, would, might, occur or be achieved, or the negative of these words or comparable terminology. By their vary nature forward-looking statements involve known and unknown risks, uncertainties and other factors which may cause the actual performance of the company to be materially different from any anticipated performance expressed or implied by the forward looking statements. Although the Company has attempted to identify important factors that could cause actual performance to differ materially from that described in forward-looking statements, there may be other factors that cause its performance not to be as anticipated. There can be no assurance that forward-looking statements will prove to be accurate, as actual results and future events could differ materially from those anticipated in such statements. According, readers should not place undue reliance of forward-looking statements.

Management Team



Mr. Greg Neeld, President & CEO

- Entrepreneur with over 20 years business experience in the private and public sectors in manufacturing and distribution
- 20 years investment and experience in the resource sector
- Inventor of patented first-to-market face protector for hockey players concurrent with 8 year professional hockey career
- Specializes in corporate structure, acquisitions, retaining industry management /marketing teams and liaison with the investment community
- Raised significant capital for private and public companies

Dr. Malcolm E. McCallum, A.B., M.S., Ph.D.

- Professor emeritus Colorado State University
- Professor of Geology and mineral exploration Colorado State University (1962 - 1995)
- Geologist U.S. Geological Survey (part-time 1956 – 1984)
- Mineral exploration consultant since 1985 specializing diamonds & precious metals
- Co-founder HDM Laboratories

Dr. George W. Poling, Ph.D., P.Eng.

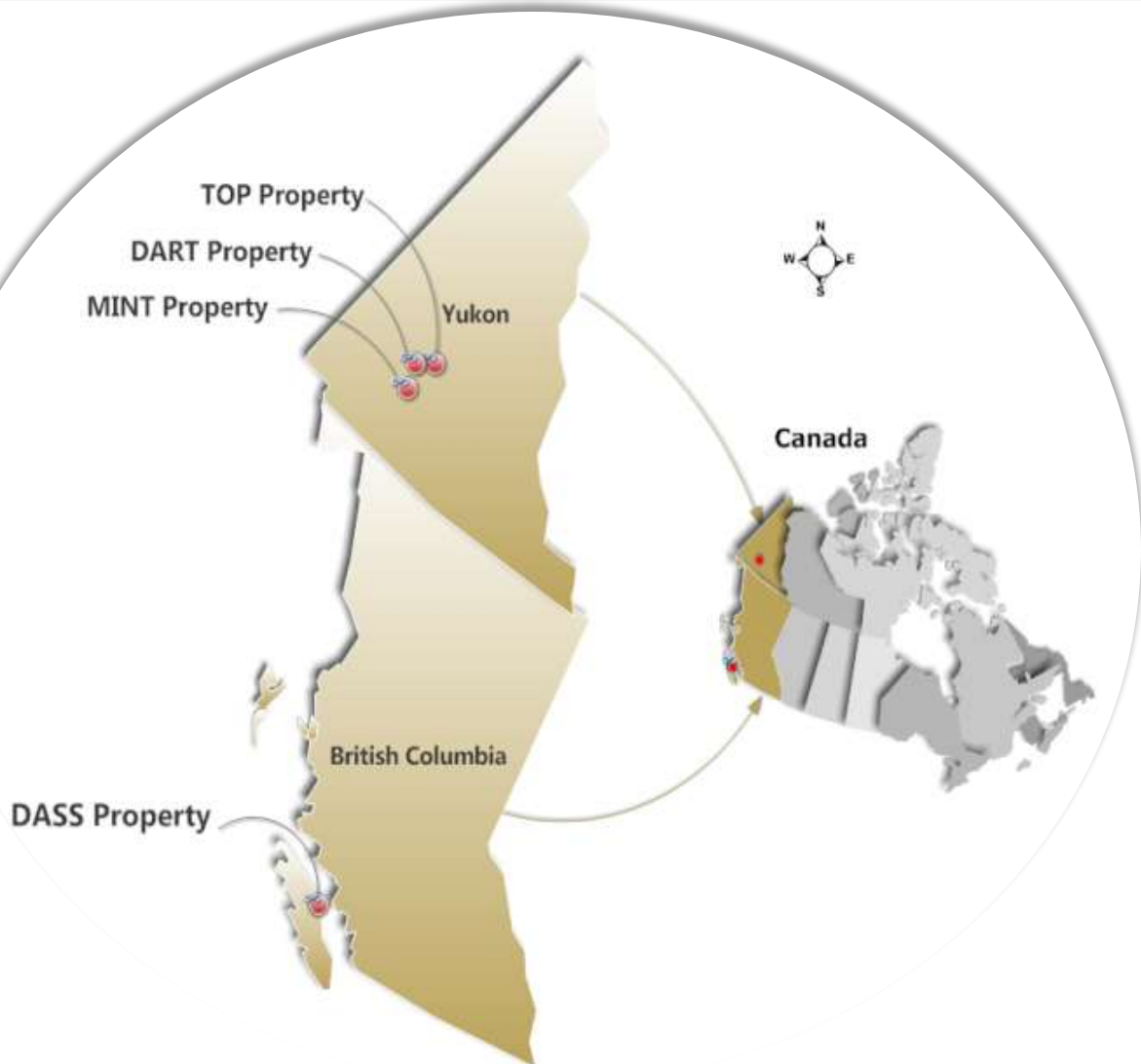
- Professor emeritus U.B.C.
- Former Head of the Department of Mining and Mineral Process Engineering at U.B.C.
- Sr. V.P. Rescan Environmental Services
- Research Director B.C. Mining Association

Corporate Overview



Stock Exchange & Trading Symbol	TSX Venture Exchange - HGO
Issued and Outstanding	20,964,170
Warrants Outstanding	11,019,773
Options Outstanding	970,000
Fully Diluted	32,953,943
12 Month Trading Range	\$0.04 - \$0.15
3 Year Trading Range	\$0.04 - \$0.90
Focus	Yukon (Carmacks Caldera) & BC, Canada
Properties	TOP, DART & MINT (Yukon)
	DASS Mountain (Vancouver Island, BC)

HAWKEYE Properties – Yukon & BC



TOP Property

- Situated Carmacks Caldera, Yukon
- Epithermal gold-silver model; or
- A porphyry copper-gold model
- NI 43-101 Technical Report
- **Drill Ready**

DART

- Situated Carmacks Caldera, Yukon
- Epithermal gold-silver model; or
- A porphyry copper-gold model

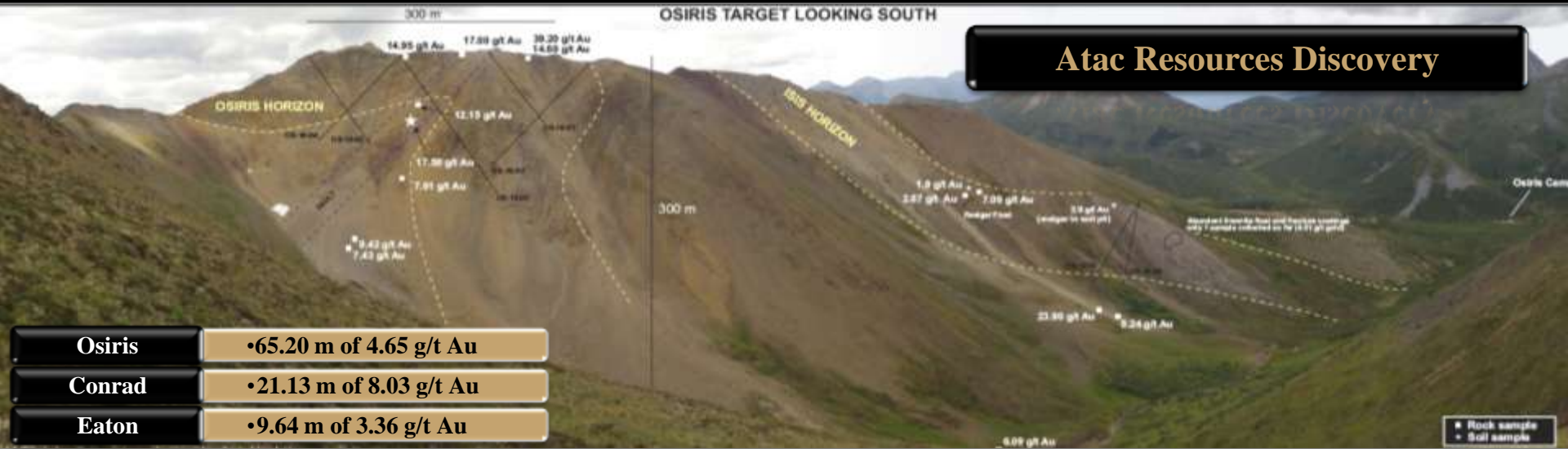
MINT Property

- Situated Carmacks Caldera, Yukon
- Epithermal gold-silver model; or
- A porphyry copper-gold model

DASS Mountain

- High grade copper (Cu) and silver (Ag) property
- **Drill Ready**

Why the Yukon - Great Discoveries



Atac Resources Discovery

Osiris	•65.20 m of 4.65 g/t Au
Conrad	•21.13 m of 8.03 g/t Au
Eaton	•9.64 m of 3.36 g/t Au



Kinross (Underworld) Discovery

Golden Saddle Zone	•Open pit - Indicated 9,665 Mt of 3.19 g/t Au
Golden Saddle Zone	•Open pit - Inferred 4,104 Mt of 2.33 g/t Au
Golden Saddle Zone	•Underground - Indicated 132 Tt of 3.23 g/t Au
Golden Saddle Zone	•Underground - inferred 918 Tt of 3.38 g/t Au
Arc Zone	•Open pit - Inferred 4,369 M/t of 1.21 g/t Au

Why the Yukon - Great Discoveries



Latte

70 m @ 1.86 g/t Au
81 m @ 1.39 g/t Au
5 m @ 8.15 g/t Au

Supremo

14 m @ 12.43 g/t Au
51 m @ 1.27 g/t Au

Double Double

9 m @ 2.04 g/t Au
35 m @ 6.30 g/t Au

T2 Structure

16 m @ 3.73 g/t Au
2 m @ 7.07 g/t Au

T6 Structure

14 m @ 2.11 g/t Au
19 m @ 2.38 g/t Au

Kona

56.75 m @ 2.21 g/t Au
23 m @ 1.92 g/t Au

Connector

1 m @ 3.65 g/t Au
8 m @ 0.73 g/t Au
2 m @ 2.09 g/t Au

Connector

7 m @ 3.16 g/t Au
3 m @ 5.67 g/t Au
2 m @ 2.32 g/t Au

The Yukon Advantage



- World Class Deposits
- 2011 exploration expenditures estimated to have exceeded \$300 Million, well above \$160 Million in 2010
- A total of 110,442 claims staked in 2011, a 38% increase over 2010
- The largest staking rush in the history of the Yukon has claimed only slightly more than 3% of the Yukon land mass
- Total land mass of the Yukon under mining claims just over 7%
- Bedrock source for all placer gold remains a mystery
- More than 2,600 mineral occurrences and more than 80 deposits with reserves
- High mineral potential and vastly underexplored with over 20 million ounces of placer gold production
- The originating mother deposit which launched the original Klondike Gold Rush could be greater than 100 Million ounces
- Well developed Infrastructure;
- Close proximity to the shipping ports of Skagway and Haines, Alaska

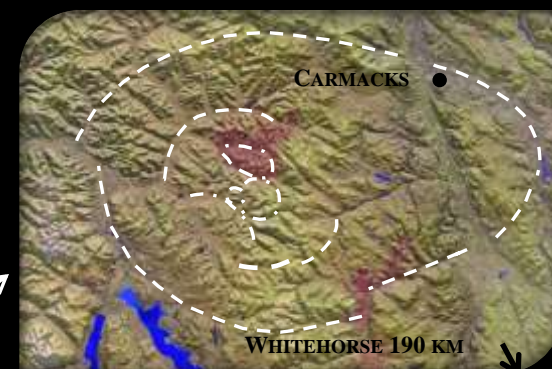
Yukon Gold Rush - 1896"



The Yukon Advantage



- Competitive Royalties and Mining Incentives;
- Settled Land Claims with twelve of fourteen First Nations and Regulatory Certainty
- Two new gold districts recently discovered by Kaminak, Underworld Resources (Kinross) and Atac
 - Dawson Range Gold District
 - Selwyn Basin Gold District
- Kaminak and Kinross projects have demonstrated combined resources of over \$2 Billion in gold
- Underworld bought out by Kinross for \$139 Million
- Largest developing area play in the past 100 years
- More discoveries to come
- **CARMACKS CALDERA** - New Yukon Discovery Area



Yukon – Carmacks Caldera Advantage



“Since the initial White Gold discovery, over 20 junior mining companies have acquired land in the region which has been dubbed “The White Gold District”.

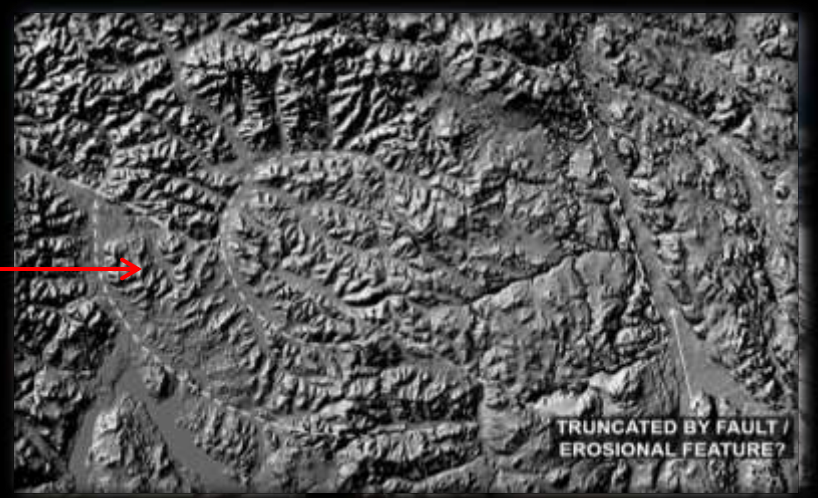
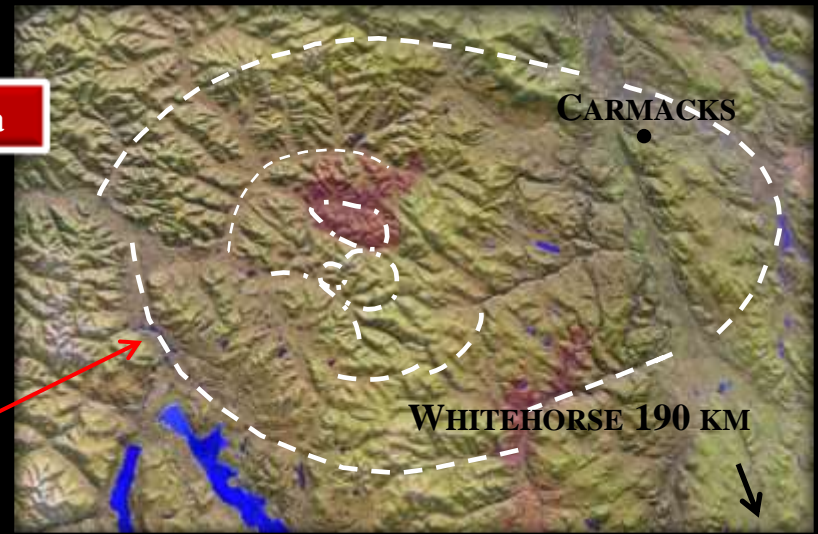
However, companies focusing their attention solely on the White Gold District may be missing opportunities farther a field when considering the geological similarities to the broader mineralizing event that created the Dawson Range Mineral Belt”

-Bennett, Colpron, Burke -Yukon Geological Survey -July 2010

“Referring to the CARMACKS CALDERA”



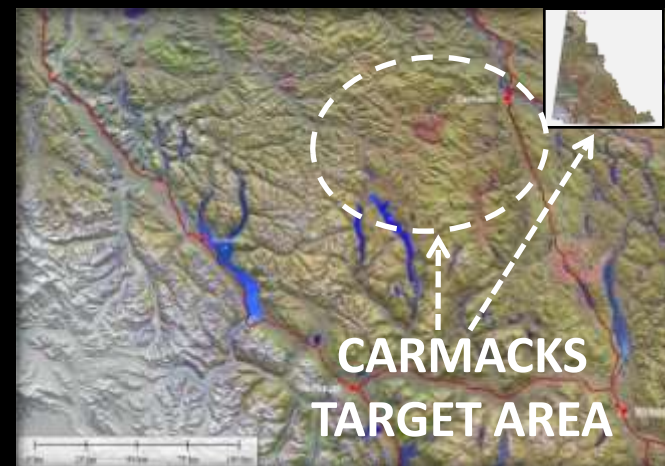
Carmacks Caldera – New Discovery Area



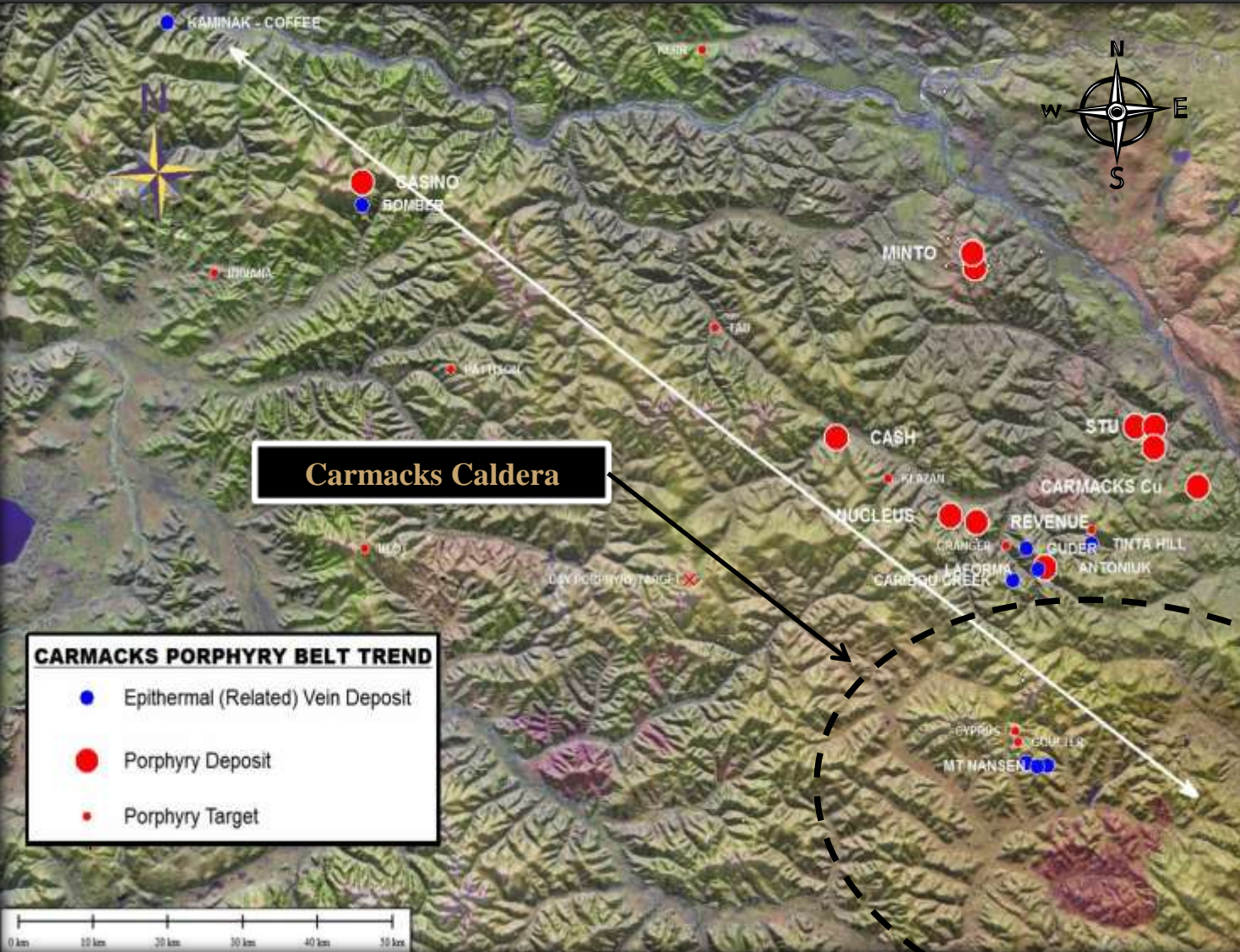
Carmacks Caldera



- New Discovery Area
- Collapsed Volcano (60km by 100 km Area)
- Strongest Group of Gold Anomalies in the Yukon
- Strongest PCA anomaly in the Yukon
- Gold Geochemical Profile may be stronger than is reported due to intense surface weathering
- Manganese (Mn) Geochemical profile may be reflecting epithermal nature of the area
- NW/SE and NE/SW structural trends (similar structures host most Gold Discoveries in Dawson Range)
- Mt. Nansen located in the Carmacks Caldera is the richest Au/Ag deposit in Yukon
 - 446,549 Tons @ 17g/t AuEQ
- South Yukon >99th percentile gold anomalies
- Significant recent discoveries



Carmacks Porphyry Belt Trend

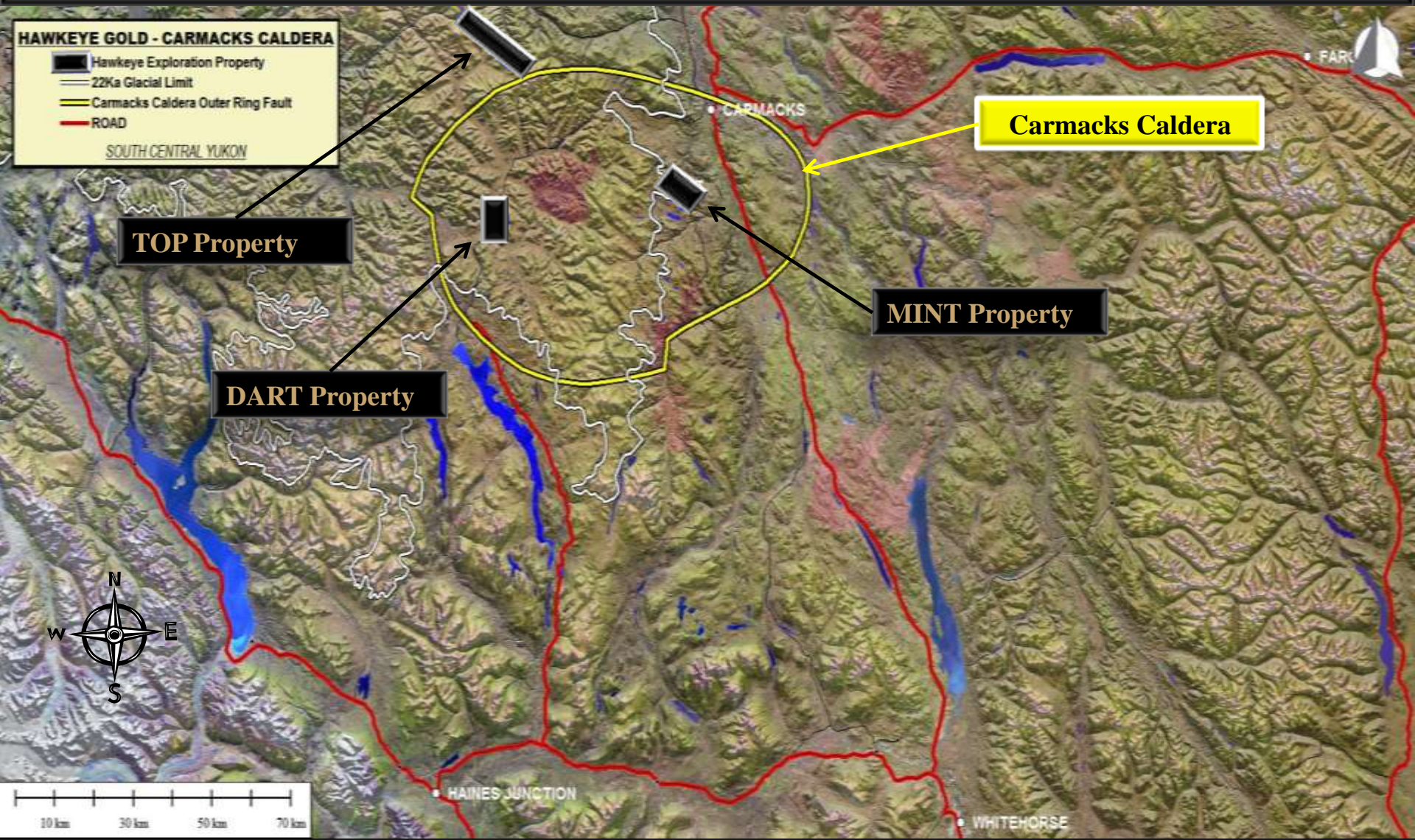


**HIGHEST DENSITY
OF PORPHYRY
AND EPITHERMAL
DEPOSITS FOUND
IN THE YUKON**

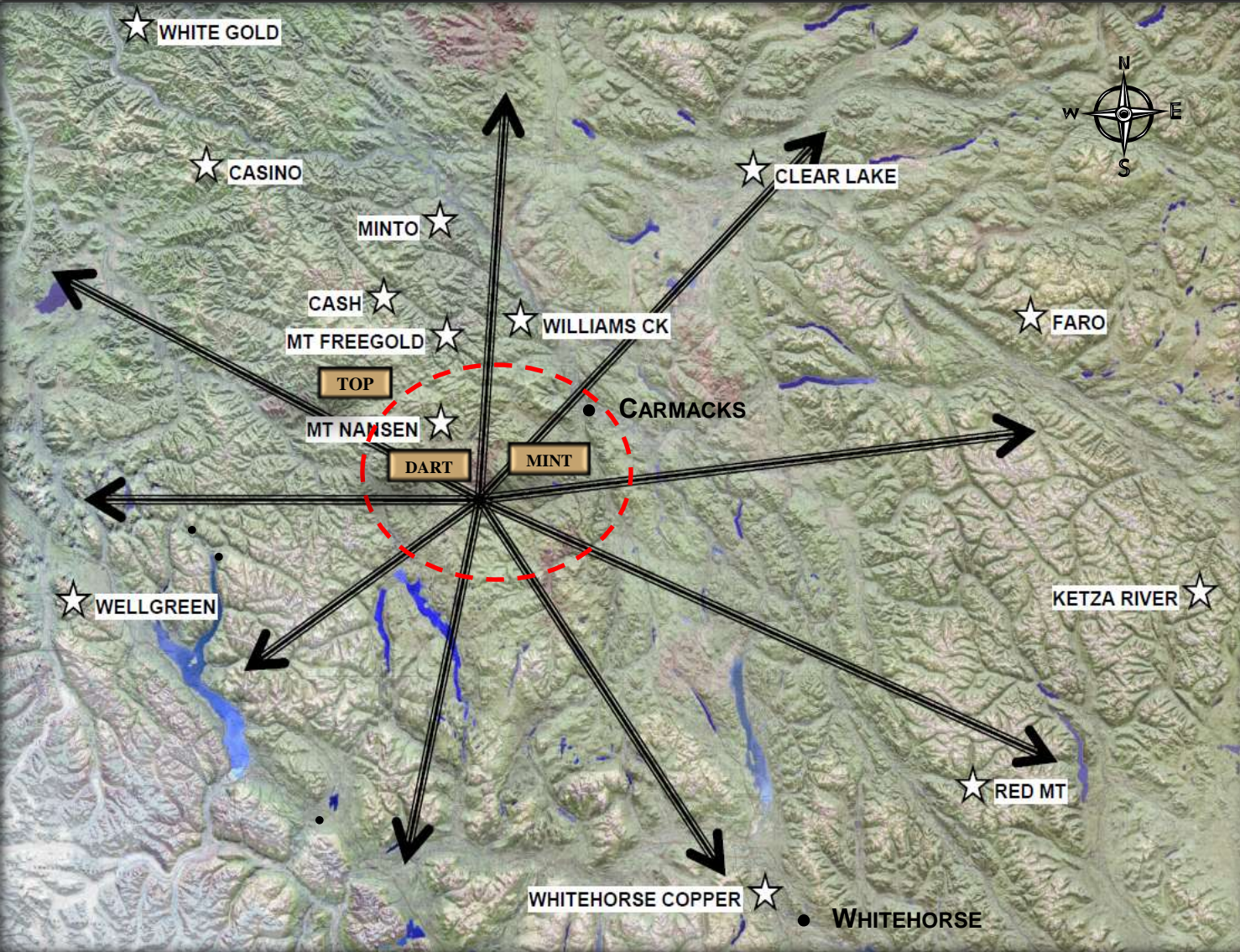


**MATURE – BUT
ONLY SCRATCHING
THE SURFACE**

TOP - DART - MINT (Carmacks Caldera)






TOP - DART - MINT



TOP-DART-MINT
SITUATED IN REGION
OF HIGH DENSITY
DEPOSITS



-  **ORE DEPOSIT DEVELOPMENT**
-  **CARMACKS CALDERA**
-  **HAWKEYE PROPERTIES**

**NI 43-101 Technical Report concludes:
“TOP has potential to host an economic gold deposit”**

2012 Drill Ready

TOP Property Overview



- Option to earn 100% interest
- 4,511 hectares
- Target Type
 - Epithermal gold-silver model; or
 - A porphyry copper-gold deposit model
- 207 km NE of Whitehorse (see right middle), capital of The Yukon and centre for supplies, accommodation and personnel
- 59 km NW of Carmacks (see right lower) where local supplies and accommodation are available
- Excellent Infrastructure
- Mt. Freegold deposit estimated at 48.5 million tonnes grading 0.70 g/t gold, 0.90 g/t silver, and 0.06% copper with a cut-off grade of 0.04 g/t is located 12 km northwest of TOP Property



TOP PROPERTY



WHITEHORSE



CARMACKS

TOP Property Overview (cont'd)



- TOP Property adjoins a discovery property (see right) that:
 - has mineralization in excess of 1.0 gram gold equivalent/tonne over significant widths (3.04 to 36.50 m) in 36 of 40 drill holes; and
 - one hole intersecting 12.51 m averaging 5.03 g/t gold and 14g/t silver
- TOP Property is also situated 20 kilometres NW of the past producing Mt. Nansen (see right) high grade gold-silver mine (556,500 tonnes grading 11.93 g/t gold and 211 g/t silver)
- Other discoveries in vicinity of TOP Property
- TOP Property situated on Casino geological side of the Dawson Gold Belt
- Never been drilled
- **TOP is 2012 Drill Ready**



TOP VIEW OF ADJACENT
DISCOVERY PROPERTY



TOP VIEW OF
MT. NANSEN IN BACKGROUND



TOP - 2011 Work Program Results



➤ TOP Property 2011 Work Programs consisted of:

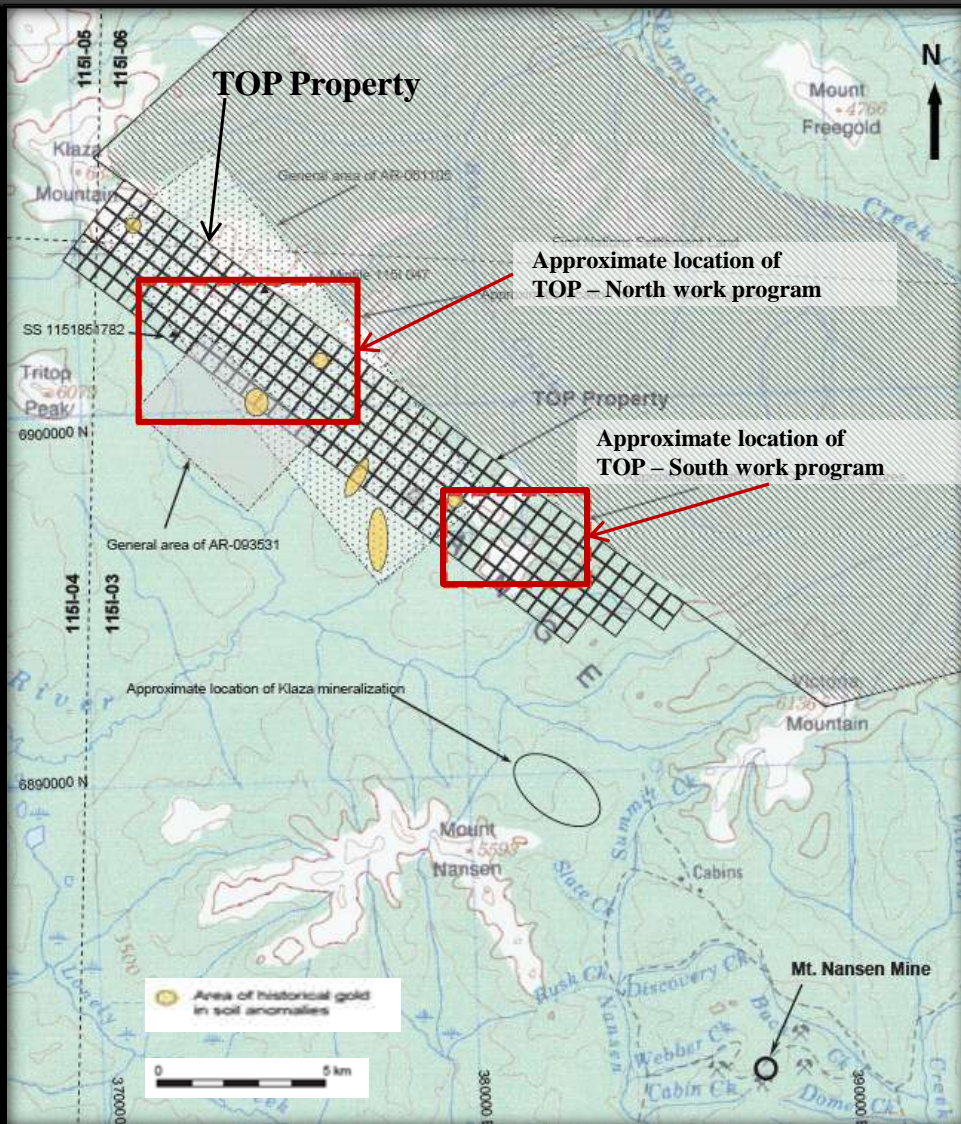
- 1,034 geochemical soil samples,
- 25 geochemical rock samples, and
- Approximately 12 km of prospecting and reconnaissance geological traverses

➤ NI 43-101 Technical Report concludes TOP has potential to host an economic gold deposit for the following reasons:

- Carbonatization and silicification of volcanic rocks (TOP North) show rocks have been altered by hydrothermal fluids and that resulting fracturing could provide location for gold precipitation
- Structural trends coincide with soil anomalies suggesting structurally controlled mineralization
- Significant gold in soil anomalies occur on property as do tracer elements (arsenic, antimony and barium)
- The TOP Property has lithological and geophysical similarities to nearby gold deposits



TOP - 2011 Work Program Results



Work programs were concentrated in two areas on the TOP Property:

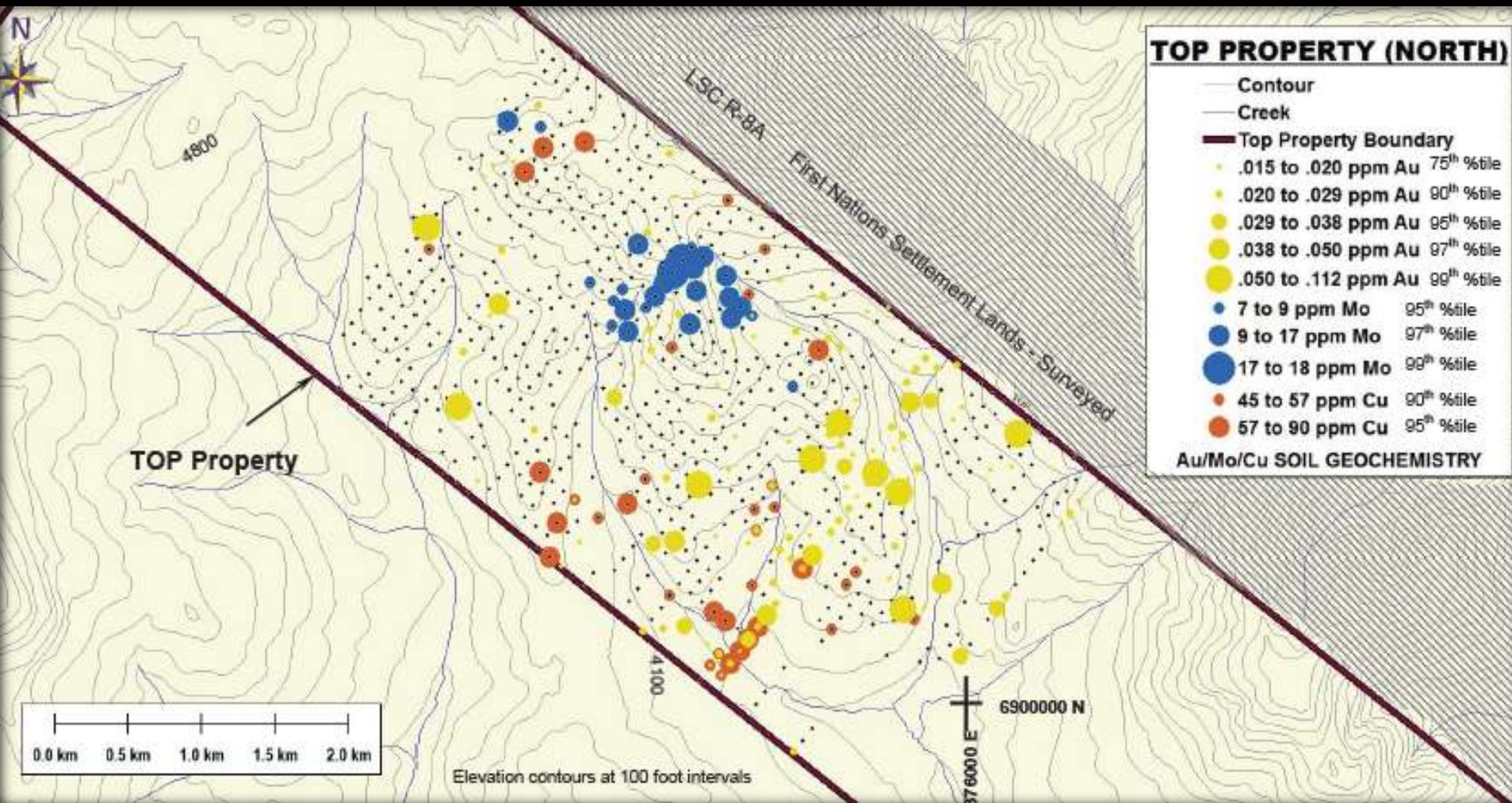
- TOP North
- TOP South

The 2011 work program covered approximately 20% of the property

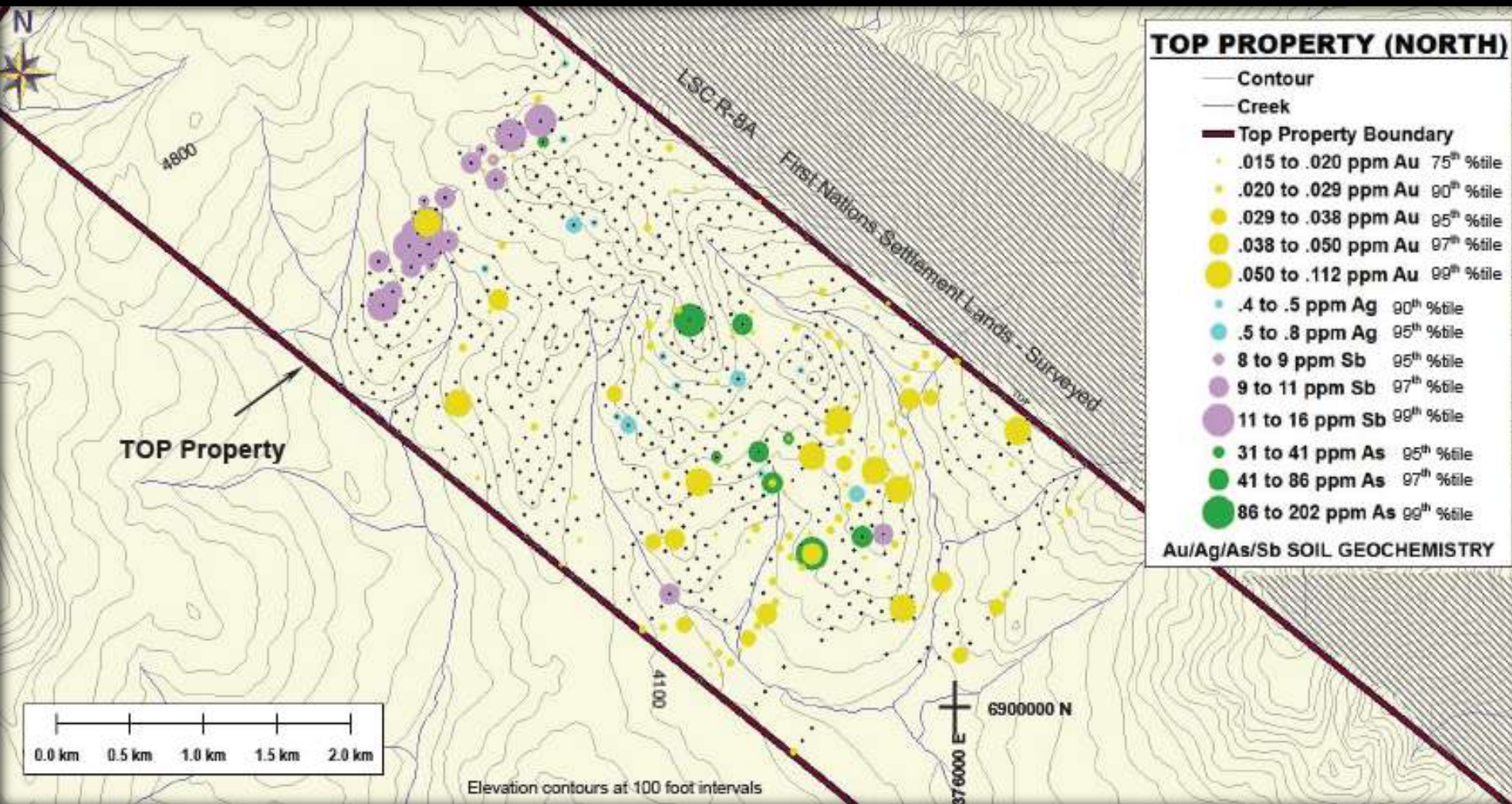
- **Soil results in the TOP North area show that:**
 - Anomalous gold values occur across the sampled area
 - Gold values are concentrated in an arc located to the east, south, and west of the central plutonic granitic knoll
 - Gold and barium distribution appears to be closely associated
 - Copper values are low and widely scattered, but distribution is similar to gold and barium

- **Historically, gold values from soil sampling are considered significant when greater than .020 ppm.**
 - Gold values from soil sampling on the Property range from <0.005 up to 0.112 ppm,
 - Silver values ranged from <0.1 ppm to 0.5 ppm
 - Copper values from 4 ppm to 80 ppm
 - Molybdenum <1 to 18 ppm
 - Antimony from <2 ppm to 16 ppm
 - Barium from 21 ppm to 1035 ppm
 - Arsenic from 5 ppm to 202 ppm.

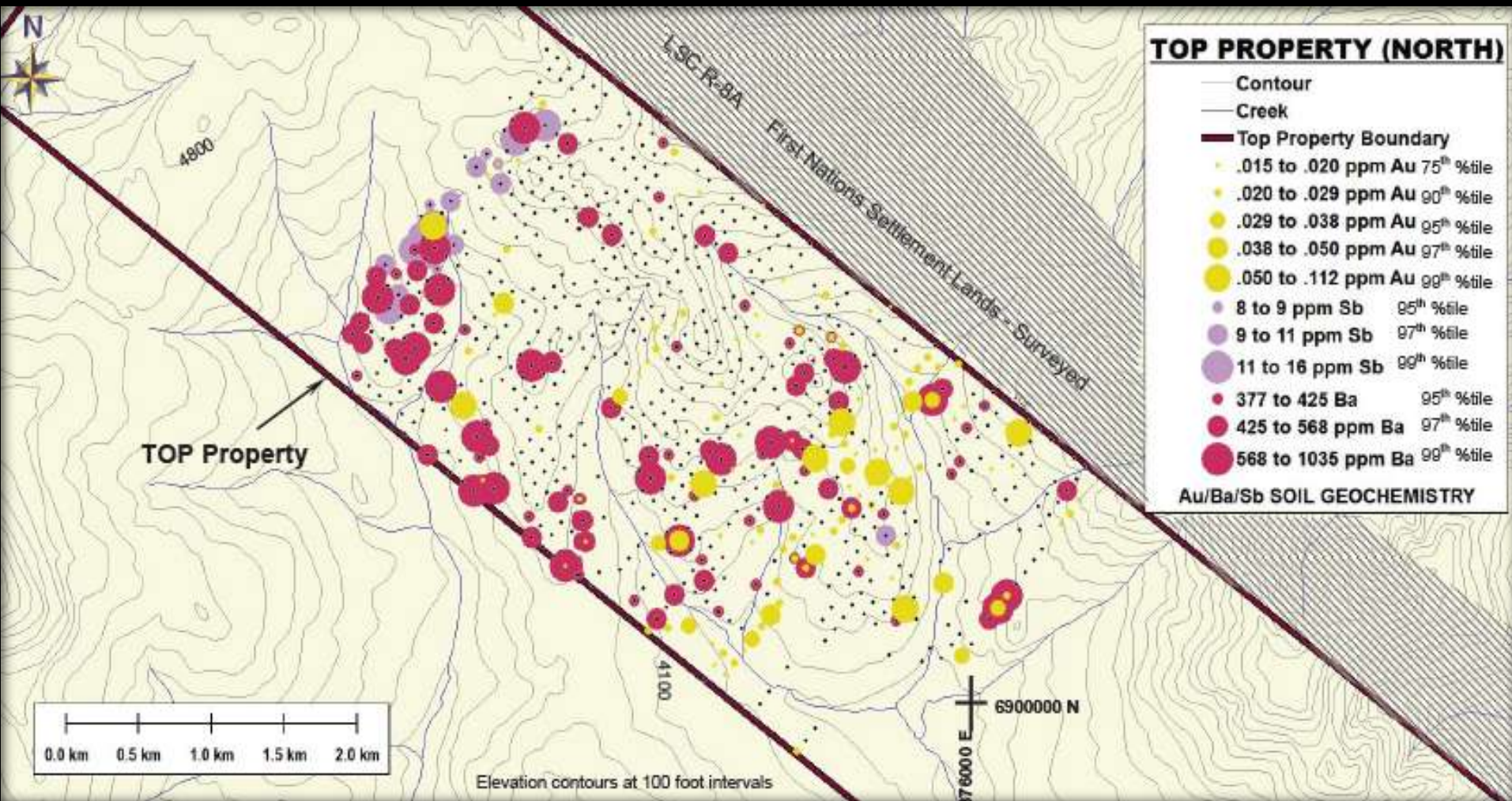
TOP North – Au, Mo & Cu Soil Results



TOP North – Au, Ag, Sb, As Soil Results



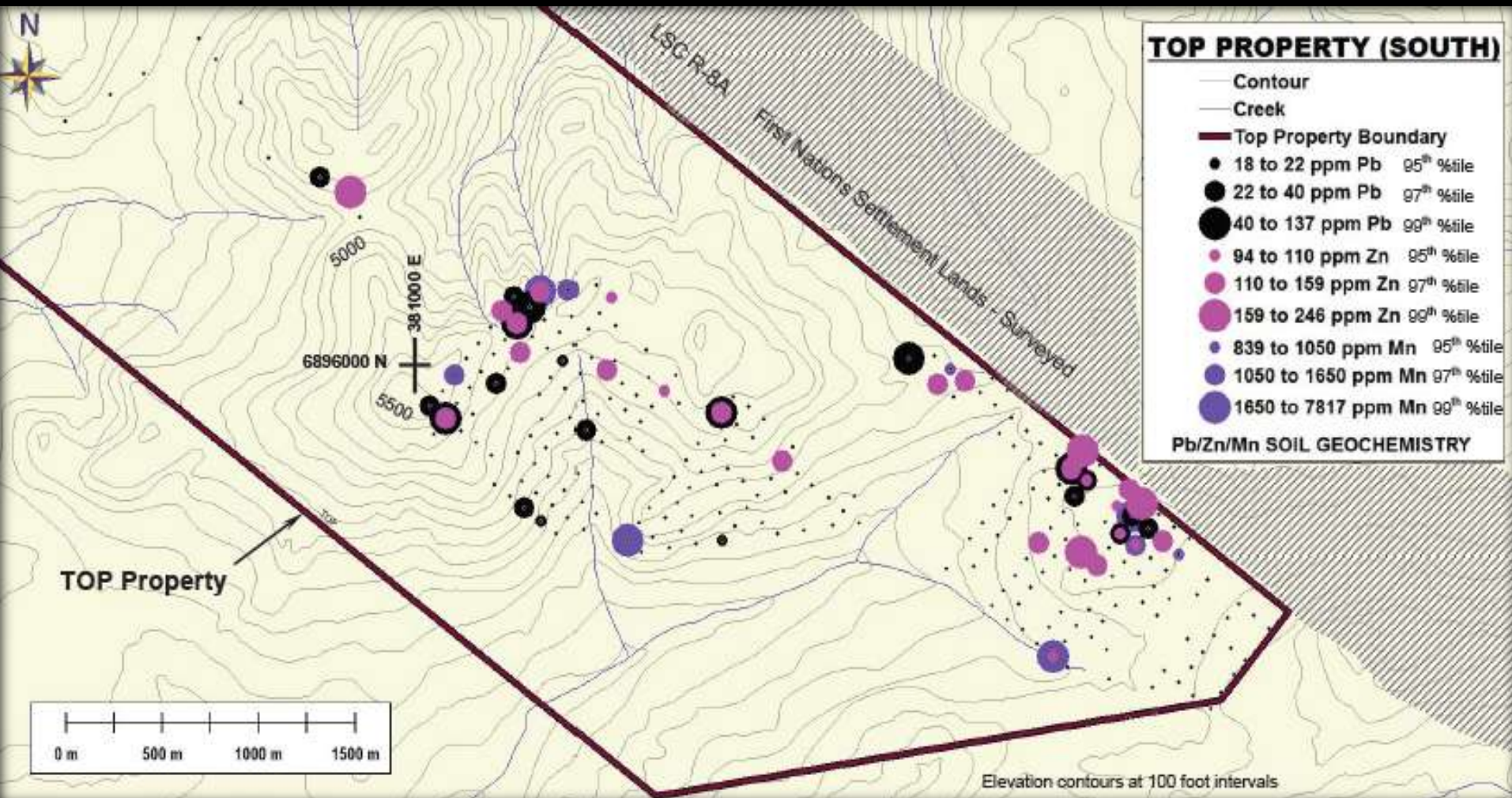
TOP North – Au, Sb & Ba Soil Results



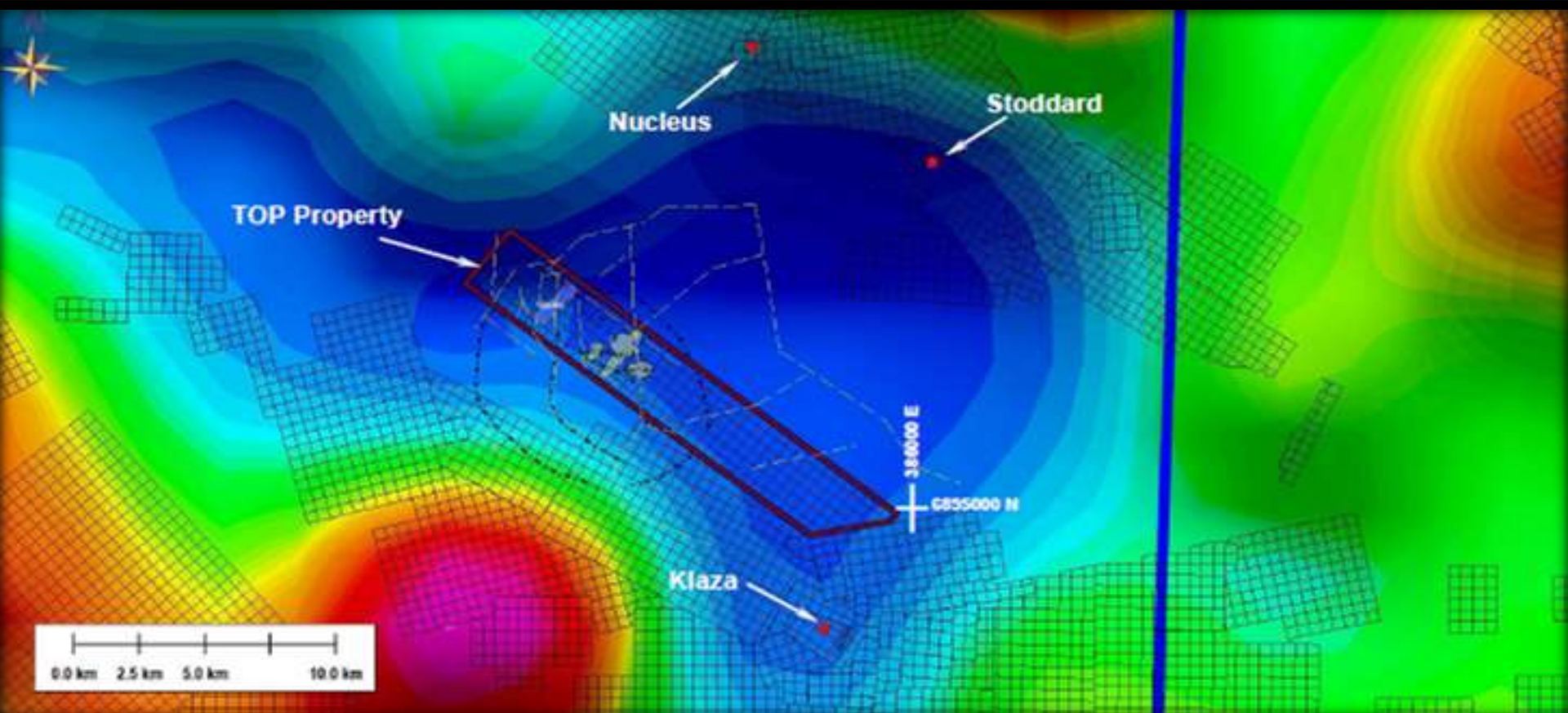
Soil results in the TOP South area show that:

- Zinc, manganese, and lead values are scattered across the sampled area
- Show clusters in the eastern and western portions of the sampled area
- These three elements show a close positive association where high values of one element are closely associated with high values of the other elements
- Soil samples analysis returned values of:
 - lead ranging from <2 ppm to 166 ppm
 - zinc from <2 ppm to 246 ppm
 - manganese from <5 ppm to 7,817 ppm

TOP South – Pb, Zn & Mn Soil Results

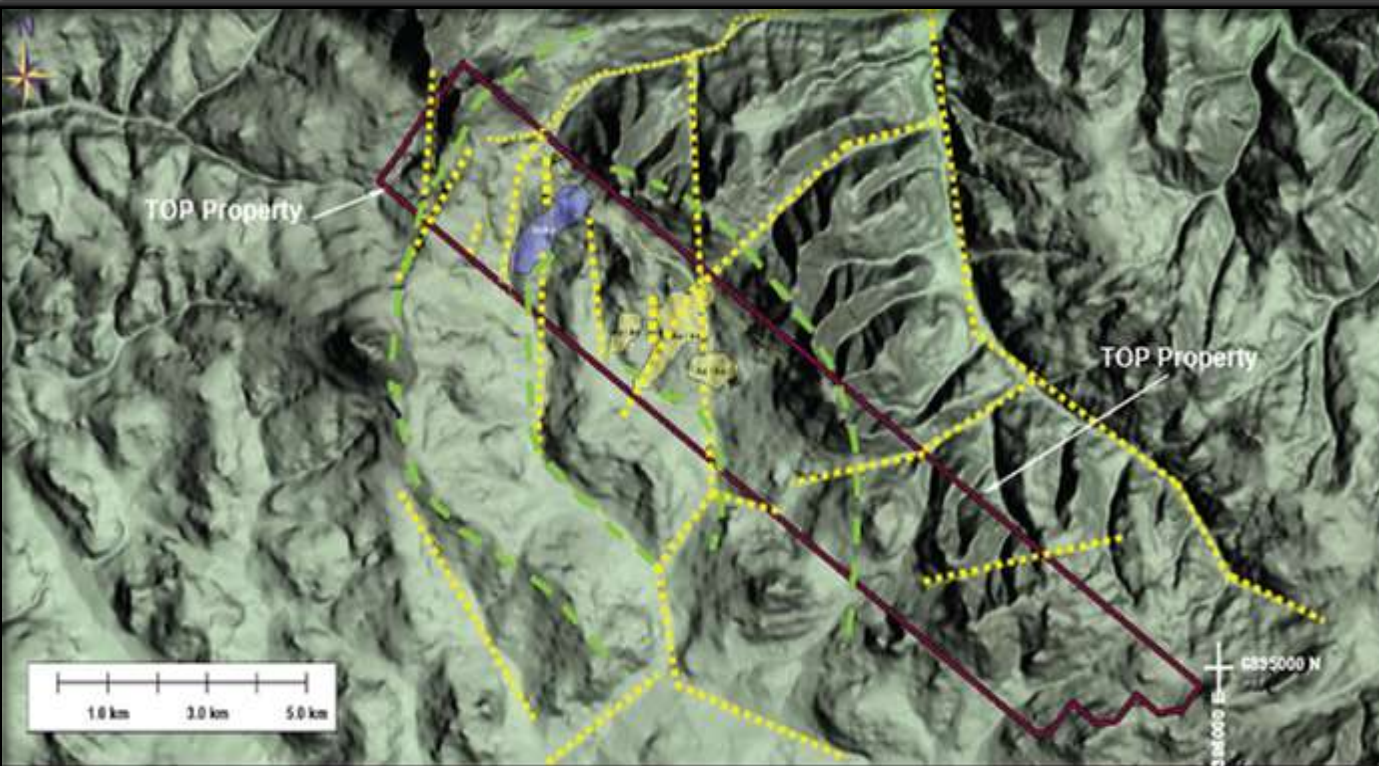




TOP Compilation - Gravity



- The figure above shows the relationship between the TOP Property, Klaza and Nucleus Deposits
- Each is situated along the rim of a gravity low, suggesting that mineralization at TOP, Klaza, and Nucleus could be related to hydrothermal activity from the same or related intrusive events
- Stoddard is part of NFG zones bordering along northern edge of the gravity low

TOP Compilation - Structure



-  Gold-Arsenic soil anomaly
-  Gold-Antimony soil anomaly

Interpreted Structure

-  Fault or lineament
-  Arcuate lineament

HAWKEYE GOLD & DIAMOND		
TOP Property		
Compilation - Structure		
Scale: As shown	NTD: 11503, 04, 06, 06	Drawn by
Date: January 2012	QP: E. Harrington	Figure: 1
E. Harrington, B.Sc, P.Geo.		

- The figure (left) shows the compilation and structural interpretation of the TOP Property and the surrounding area
- It suggests the area is cut by numerous generally northeast and northwest-trending faults and/or lineaments
- As well, there are interpreted arcuate lineaments suggesting Caldera formation or subsidence
- The raised area at the centre of the arcuate structure could be the surface expression of intrusive-related doming effect
- Gold and antimony soil anomalies appear to be related to some of the interpreted fault structures

TOP Rock Sample



TOP rock sample is a:

- Porphyry intrusive cut by sheeted veins with tightly spaced sheeted vein arrays
- Has quartz veins carrying sulphides with disseminated sulphides (pyrite) present in the rusty intrusive rock

The Fort Knox Gold Deposit in Alaska was formed in rock type similar to this sample

**ROCK SAMPLE (LEFT)
FROM OUTCROP BELOW**



DART Property - Carmacks Caldera - Yukon



DART Property Overview



- Option to earn 100% interest
- 500 hectares
- Target Type
 - Epithermal gold-silver model; or
 - A porphyry copper-gold deposit model
- 175 km NNW of Whitehorse, capital of The Yukon and centre for supplies, accommodation and personnel
- 58 km SW of Carmacks where local heli-airport (see right), supplies and accommodation are available
- Excellent Infrastructure
- Bulls Eye magnetic high
- Intersecting northwest and northeast cross faults cover magnetic high



DART Property Overview (cont'd)



- Anomalous gold in stream sediments
 - 136 ppb Au and 2,654 ppm Mn anomaly
 - 61 ppb Au (repeat anomaly)
- Mt. Freegold deposit estimated at 48.5 million tonnes grading 0.70 g/t gold, 0.90 g/t silver, and 0.06% copper with a cut-off grade of 0.04 g/t is located 34 km northwest of DART Property
- DART Property is also situated 22 kilometres SSW of the past producing Mr. Nansen high grade gold-silver mine (556,500 tonnes grading 11.93 g/t gold and 211 g/t silver)
- Other discoveries in vicinity of DART Property
- DART 2011 Work Program consisted of:
 - 118 geochemical soil samples, and
 - 20 geochemical rock samples
- **Results Pending**



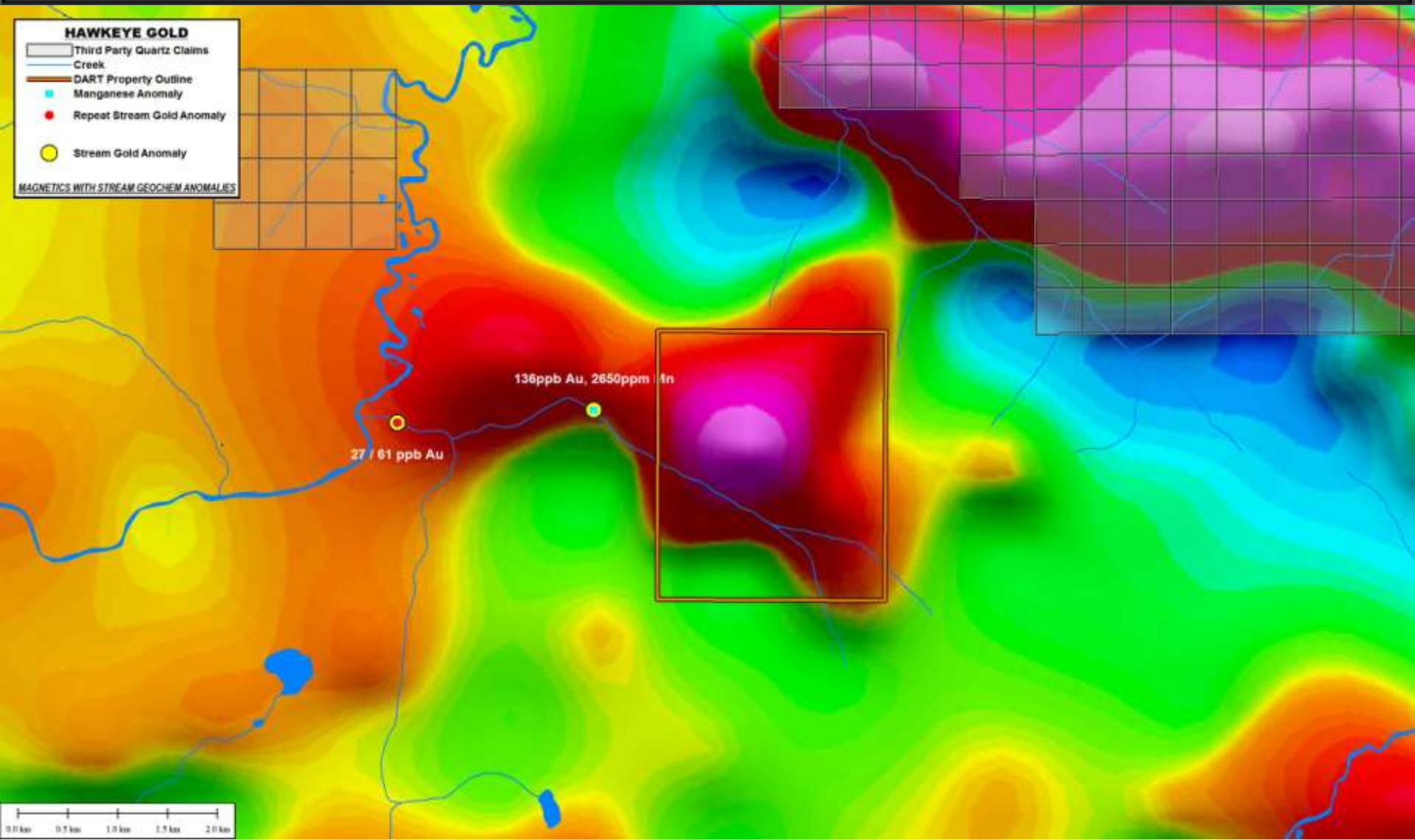
DART – Magnetics & Stream Geochem



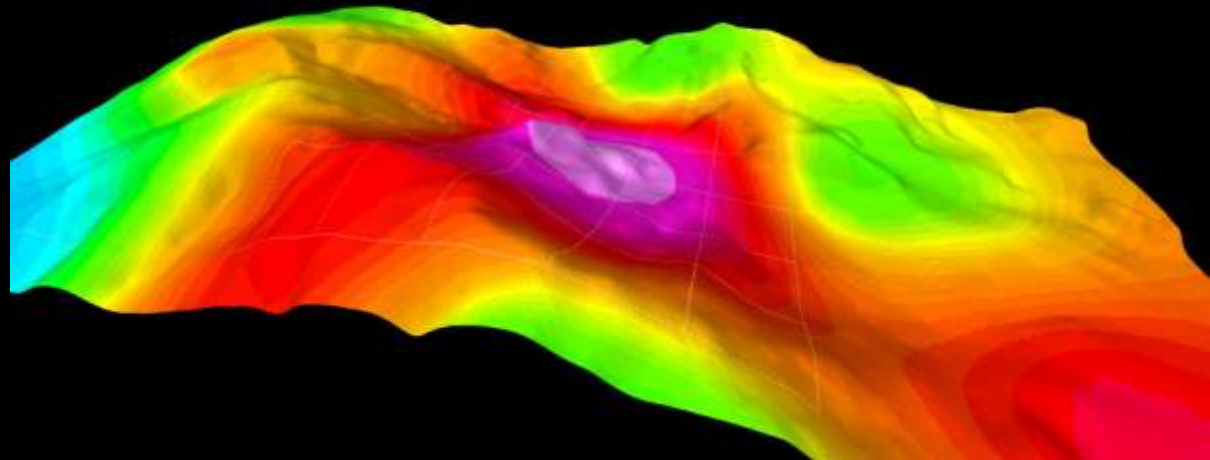
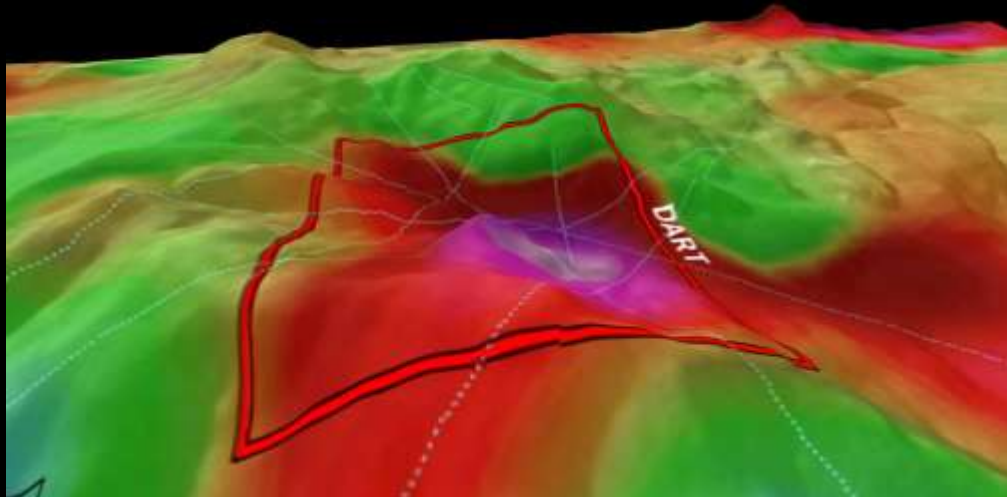
HAWKEYE GOLD

- Third Party Quartz Claims
- Creek
- DART Property Outline
- Manganese Anomaly
- Repeat Stream Gold Anomaly
- Stream Gold Anomaly

MAGNETICS WITH STREAM GEOCHEM ANOMALIES



DART – Bulls Eye Mag & Cross Structures



MINT Property (Carmacks Caldera) Yukon



MINT Property Overview



- Option to earn 100% interest
- 1,900 hectares
- Target Type
 - Epithermal gold-silver model; or
 - A porphyry copper-gold deposit model
- 153 km NNW of Whitehorse
- 20 km SW of Carmacks (right middle) where local heli-airport (right lower), supplies and accommodation are available
- Excellent Infrastructure
- Magnetic high anomalies
- Intersecting northwest and northeast cross faults cover magnetic high
- Anomalous gold in stream sediments



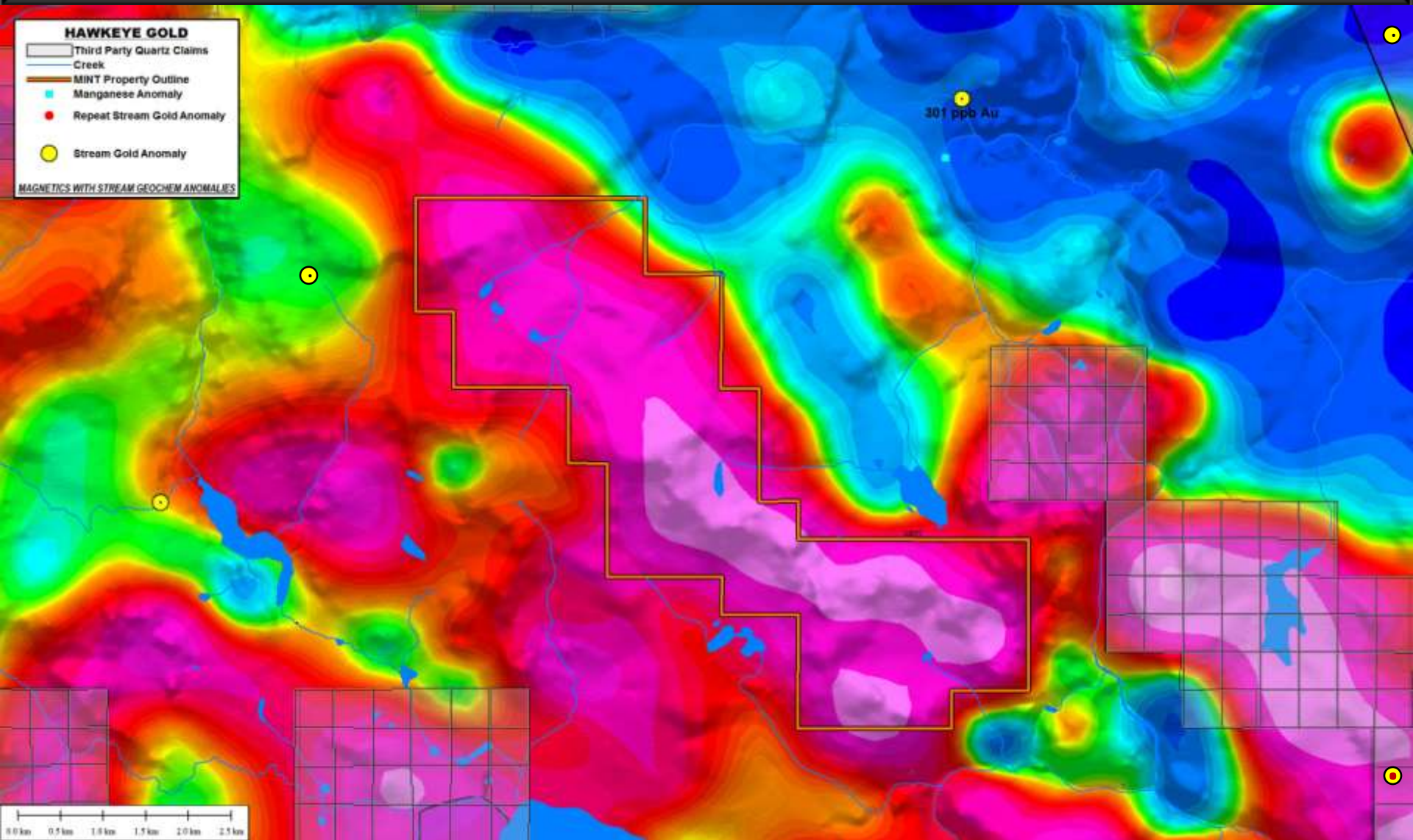
MINT Property Overview (cont'd)



- MINT Property is also situated 39 kilometres SE of the past producing Mr. Nansen high grade gold-silver mine (556,500 tonnes grading 11.93 g/t gold and 211 g/t silver)
- MINT 2011 Work Program consisted of:
 - 79 geochemical soil samples, and
 - 20 geochemical rock samples
- **Results Pending**



MINT – Magnetics & Stream Geochem



DASS Mountain – Vancouver Island, BC



- High grade copper (Cu) and silver (Ag) project
- High grade veins discovered by examination of forestry road-cuts
- Stockwork open pit model
- **Drill Ready**

DASS Mountain Overview



- Option to earn 100% interest
- 1,268 hectares
- Target Type
 - High grade copper (Cu) and silver (Ag) model
 - Large stockwork system amendable to low-cost open pit mining
- Located in a mineralized mining district on Vancouver Island
- Excellent Infrastructure:
 - Highway and logging road access to the Property
 - BC Hydro power grid is adjacent to the Property
 - Accommodation and supplies available in Campbell River and Courtenay
- Never been drilled
- Drilling cost approx. \$125 per meter (includes mob/demob)
- **DASS Mountain is 2012 Drill Ready**



DASS Mountain



- Situated 35 km north of the Myra Falls Mine that has been a huge producer since 1966
- Situated on same lake (north end) that the Myra Falls Mine (south end) is located
- Interesting cross-fault structure
- Myra Falls has been producing average ore concentration of 5.4% zinc (Zn), 0.5% lead (Pb), 1.0% copper (Cu), 45 g/t silver (Ag) and 1.3 g/t tonne gold (Au) since 1966

DASS Mountain – Access

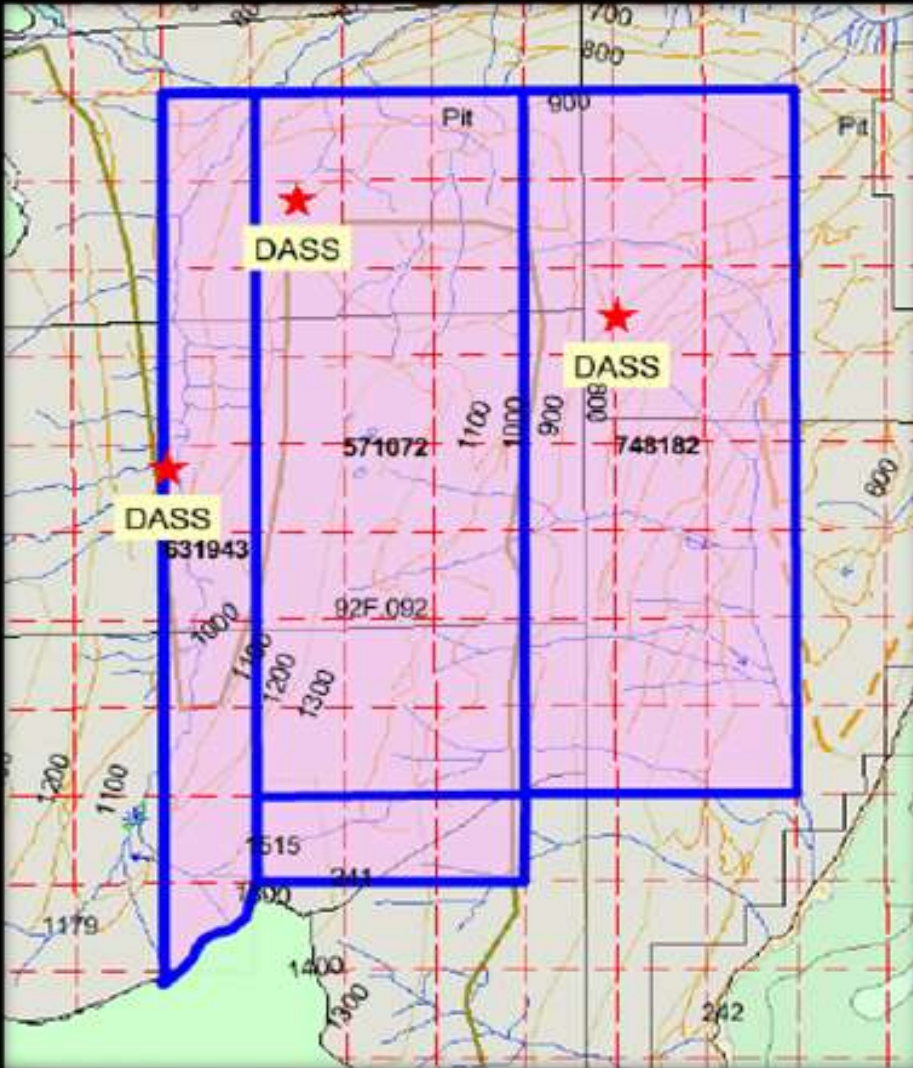


Vancouver to Campbell River – approximately 45 minutes by air or 1.5 hours by ferry ride to Nanaimo, then a 45 minute drive to Campbell River

Campbell River to Property – approximately 1.5 hours by vehicle via Highway 28 west from Campbell River and then on logging roads.

Logging Road Access – there are numerous partially de-activated logging roads that provide excellent access to the claims (shown in map above)

DASS Mountain - Vancouver Island, BC



DASS Mountain – Rock Sample Results



Rock sample analysis results for 13 samples submitted to Acme Labs

Sample #	Cu %	Ag g/t (ppm)	Sample #	Cu %	Ag g/t (ppm)
D11-1	20.761	40.1	UC2-1	7.828	20.1
D11-2	0.16	0.4	UC2-2	15.747	43.1
D11-3	3.372	6.1	UC2-3	1.968	5.7
D11-4	3.677	5.1	UC2-4	6.146	16.1
D11-5	15.389	33.5	UC2-5A	1.079	3.1
D11-6	2.201	3.3	UC2-5B	0.90	2.6
D11-7	8.936	12.8	UC2-6	7.099	20.7



HAWKEYE Gold & Diamond Inc.



TSX Venture Exchange

Symbol : HGO

Investor Relations

Dir: (604) 673-3314

TF: 1-800-665-3624

hgo@hawkeyegold.com

www.hawkeyegold.com

Corporate Office

120 Milross Avenue, Suite 2302

Vancouver, B C, Canada V6A 4K7

Tel: (604) 688-2929

Fax: (604) 688-3402