



HAWKEYE Gold & Diamond

is a progressive mineral exploration company based in Vancouver, British Columbia, Canada listed on the TSX Venture Exchange under the trading symbol HGO

The HAWKEYE team offers investors hands-on professional management, significant gold and silver mineral projects located in the Yukon, Canada, a strong financial position and a solid commitment to enhancing shareholder value. These are the strategic initiatives HAWKEYE has planned to build an international mining corporation

STOCK INFORMATION

TSX Venture: **HGO**
 Shares Issued: 16.8 M
 Market Cap.: \$1.7 M
 Year High/Low: \$0.23 - \$0.08

[Link to Website](#)

hgo@hawkeyegold.com

October 2011

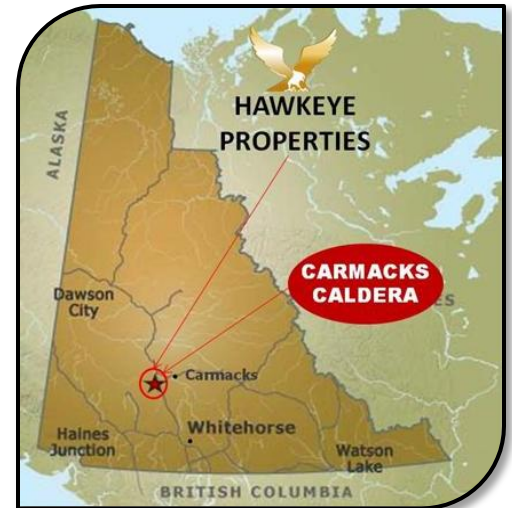
THE NEW YUKON GOLD RUSH



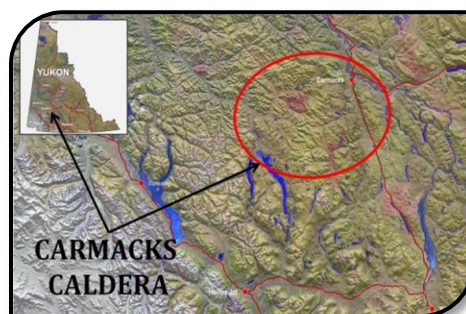
HAWKEYE Gold entered the New Yukon Gold Rush of the 21st Century in early 2011 by acquiring an option to purchase a 100% interest in each of the **TOP, DART** and **MINT** Properties that are located approximately 125 km northwest of Whitehorse, Yukon, Canada. The Properties which total 6,911 hectares are epithermal **GOLD-SILVER** targets situated within the prolific Tintina Gold Belt located on the northern edge of the Yukon's Carmacks Caldera.

WHY THE YUKON

- The largest developing mineral exploration area play over the past 100 years
- High mineral potential and vastly under explored territory
- Ranked second by the Fraser Institute as a world mining jurisdiction
- Eleven of fourteen First Nation final and self-government agreements concluded
- Over 20 million ounces of placer gold production
- The originating mother lode which launched the original Klondike Gold Rush could be greater than 100 million ounces
- Claim staking off the charts with 108,261 staked since April 2010
- Exploration expenditures exceeded \$160 million in 2010
- The Yukon is in close proximity to ice free shipping ports
- Excellent road infrastructure and electrical grid
- A single environmental assessment process timeline
- Two new gold districts recently discovered; the White Gold District in the Dawson Range Gold Belt and the Selwyn Basin Gold District
- Significant recent discoveries by Kaminak, Atac, Underworld Resources & others
- Underworld Resources acquired by Kinross for \$139 million
- The Kaminak and Kinross projects have demonstrated combined resources of over \$2 billion in gold
- Carmacks Caldera **"New Discovery Area in the Yukon"**

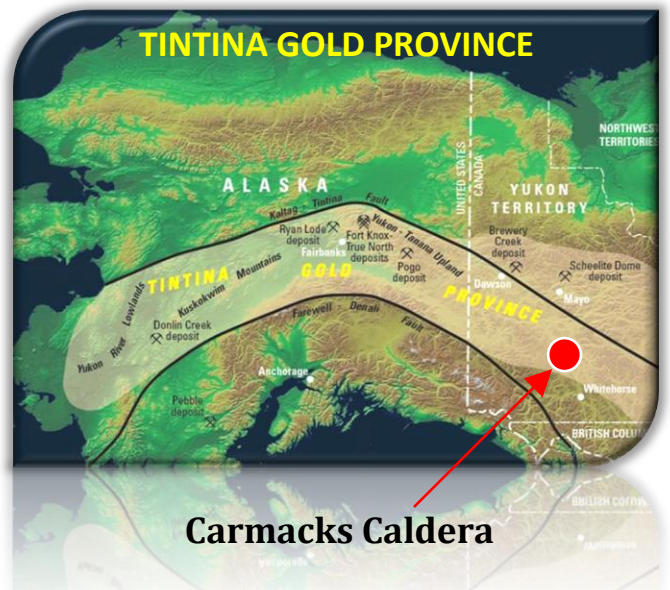


CARMACKS CALDERA "NEW DISCOVERY AREA IN THE YUKON"



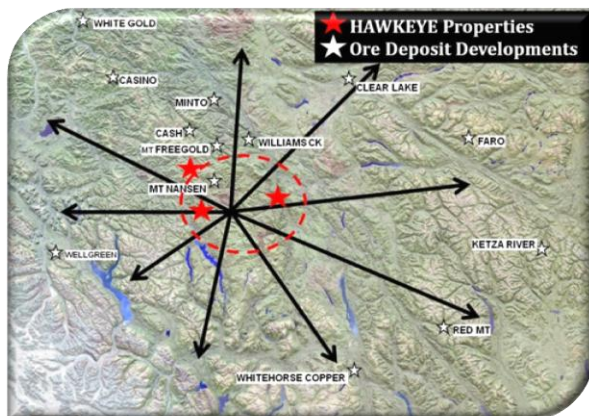
The Carmacks Caldera is considered by many to be a New Discovery Area in the Yukon and is highly prospective for gold and silver. The Carmacks Caldera (see figure left) is inferred to be a volcanic related subsidence structure (collapsed volcano) situated approximately 175 km northwest of Whitehorse, Yukon and is approximately 60 km by 100 km in area.

THE CARMACKS CALDERA is situated in the prolific Tintina Gold Province (see figure right) which begins in upper British Columbia, trends northwest through the Yukon and west southwest through the state of Alaska. The Tintina Gold Province hosts the Donlin Creek, Ryan Lode, Pogo, Brewery Creek, Scheelite Dome and Fort Knox deposits. The Carmacks Caldera is also located in the Dawson Range Gold Belt where a number of porphyry and epithermal related vein deposits are situated. The Dawson Range Gold Belt also hosts the new world-class discoveries made by Kinross, Kaminak Gold and others in the White Gold District.



CARMACKS CALDERA HIGHLIGHTS

- Strongest group of gold anomalies in the Yukon
- South Yukon >99th percentile gold anomalies
- Structural trends trending in the NW/SE and NE/SW direction which are similar structures that host most gold discoveries in the Dawson Range Gold Belt
- Excellent infrastructure by way of paved and off roads, hydro power, water and accommodation
- The strongest principal component analysis (PCA) anomaly in the Yukon
- Mt. Nansen Mine (past producer) located in the Carmacks Caldera is the richest gold and silver deposit in the Yukon 446,549 tonnes @ 17g/t Au equivalent
- The deposit at Mt. Nansen has intermediate sulfidation geochemistry very similar to the Lihir Island (65 million ounce gold deposit), Porgera, Round Mt. and Cadia Ridgeway collapsed Calderas
- Central and northern portion of the Carmacks Caldera is in non-glaciated terrain
- Highest 99th percentile gold in stream sediments in Yukon assaying >100 ppb and as high as 4,500 ppb
- Both landsat imagery and regional magnetics show elongated NW trending lineaments that cut through the center of the Carmacks Caldera
- NW trending structures are the main structural trends that hosts mineralization at the White Gold, Coffee and Casino discoveries and at the past producing Mt. Nansen Mine
- Secondary NE trending structures have also been linked to gold deposition in the Dawson Range Gold Belt
- The Caldera has fabulous structures with both NW and NE trends and other geological features to potentially host new and significant discoveries



HAWKEYE'S PROPERTIES

The **TOP, DART and MINT** properties are located in the Yukon, Canada situated on the northern edge of the Carmacks Caldera. The TOP and DART Properties are situated in non-glaciated terrain and the eastern tip of the MINT has been exposed to some regional (not continental) glaciation. The Properties have bulls-eye magnetic highs and are intersected by NW trending lineaments which are the main structural trends that hosts mineralization at the White Gold, Coffee and Casino major discoveries and at the past producing Mt. Nansen Mine (see figure left). These



structures also include NE trending structures that are linked to gold deposition in the Dawson Range Gold Belt. The Properties contain strong to significant stream sediment and gold in soil geochemical anomalies. The TOP Property is HAWKEYE's main focus due to assay results from Kennco Explorations gold in soil geochemical surveys performed over the Property during the 1970's ranging from 30 ppb to over 350 ppb. The TOP Property was never drilled.



HAWKEYE'S YUKON PROPERTIES

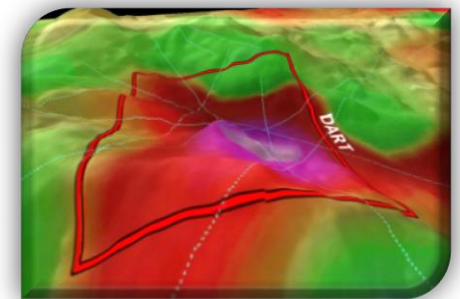
TOP, DART & MINT [GOLD-SILVER]

TOP Property - consists of 4,511 hectares and is located 207 km northwest of Whitehorse (NTS 115I03) situated on the northern edge of the Yukon's Carmacks Caldera which is considered to be a new discovery area situated within the Dawson Range Gold Belt and the prolific Tintina Gold Province. The TOP Property is HAWKEYE's flagship and is its main focus in the Yukon. The TOP Property is located along a NW trending fault structure, which appears to pass through the Mt. Nansen Mine area to the SE. NE trending structures cut across the Property, intersecting the main NW trending structure in several locations. The Property is underlain by a large, slightly elongated, bull's-eye magnetic high anomaly. The Property which is in non-glaciated terrain has several gold anomalies found in creeks draining the entire length of the Property. A repeatable gold anomaly with values of 12 ppb / 24 ppb and an 18 ppb gold anomaly were identified in creeks on the northern end of the claims. Other gold anomalies found in creeks draining the Property included values of 17 ppb and 106 ppb. Significant gold in soil anomalies obtained from the Property ranged from 30 ppb to over 350 ppb. The TOP Property has access to excellent infrastructure and has never been drilled

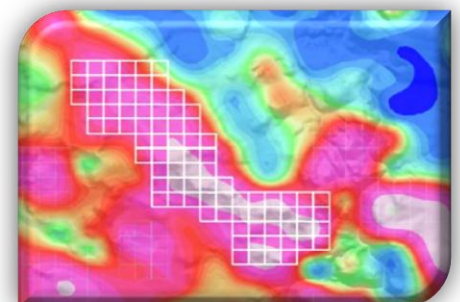
The rock sample (right) taken from the TOP property is a porphyry intrusive cut by sheeted veins with tightly spaced sheeted vein arrays observed and the quartz veins carrying sulphides has disseminated sulphides (pyrite) present. A 385 ppb gold anomaly in soils has been mapped near this outcrop. Of interest, the Fort Knox gold deposit in Alaska was formed in rock type similar to this rock sample...[Click for more information](#)



DART Property - consists of 500 hectares and is located 175 km northwest of Whitehorse (NTS 115H14) situated on the northern edge of the Yukon's Carmacks Caldera and is situated within the Dawson Range Gold Belt and the prolific Tintina Gold Province. The DART Property which is located approximately 22 km SW of the Mt. Nansen Mine is situated in non-glaciated terrain and has a large NW trending fault structure that cuts through the centre of the Property. The Property is situated over a bull's eye magnetic high, which is at the intersection of multiple NW and NE trending fault structures. Two stream sediment gold anomalies (one 95th percentile (>17 ppb) and one 99th percentile (>92ppb)) occur in the main creek draining the Property. Two soil geochem anomalies assayed 136 ppb Au (gold) and 2,654 Mn (Maganese) and 61 ppb (repeat anomaly), respectively. The Property has access to excellent infrastructure and has never been drilled...[Click for more information](#)



MINT Property - consists of 1,900 hectares and is located 153 km northwest of Whitehorse (NTS 115H16) situated on the northern edge of the Yukon Carmacks Caldera. The Property appears to be at the intersection of several NW and NE trending fault structures. The NW trending faults show 3 different orientations. NE trending structures form a 5 km wide window that exists in the central part of the Property. The Property hosts an elongated NE trending magnetic anomaly that follows the orientation of the local faults. The Property hosts a circular feature in the far SE part of the claims. The 3D image of the circular feature looks like a small caldera. Magnetic high anomalies are found on the rim of the circular structure. A strong stream sediment gold anomaly is found in a stream draining the north end of the Property. A 301 ppm gold value (>99th percen-tile) was found in the creek...[Click for more information](#)



2011 Work Programs - results from our 2011 work programs will be announced shortly. Please contact Investor Relations for further information.



INVESTMENT HIGHLIGHTS

- ✓ Only 16.8 million shares issued
- ✓ Three properties totalling 6,911 hectares located in the heart of the New Yukon Gold Rush
- ✓ 2011 work program results to be announced shortly
- ✓ A proven and experienced management team with over 75 years in the publically traded resource sector

MISSION

Our corporate philosophy is to build strong asset value through diversification, the acquisition of low-cost high potential mining opportunities worldwide, manage our business activities in an environmentally responsible manner while contributing to the well-being of the local community and economy. Our goal is to ultimately achieve full time commercial production of our projects for significant growth and early returns on investment to maximize shareholder value.

VISION

HAWKEYE Gold & Diamond is focused upon being a leader in the New Yukon Gold Rush of the 21st Century through the exploration, development and ultimate production of its TOP, DART and MINT gold and silver projects located in the Yukon, Canada.

INVESTOR RELATIONS

Greg Neeld, President and CEO

Mobile: 604-908-8511

greg@hawkeyegold.com

Toll Free: 1 800 665-3624

Office: 604.878.1339

Fax: 604.688.3402

hgo@hawkeyegold.com

www.hawkeyegold.com



HAWKEYE
GOLD & DIAMOND INC.

TSX.V - HGO

CORPORATE OFFICE

120 Milross Ave, Suite 2302
Vancouver, British Columbia
Canada V6A 4K7

MANAGEMENT TEAM

Mr. Greg Neeld, President /CEO

Dr. Malcolm E. McCallum, PhD

Dr. George W. Poling, P.Eng.



[Click to view Presentation](#)

